

## STAFF

### *Pastor*

Rev. Chuck Layton

### *Children/Youth Ministry*

Jessica DuBord (interim)

### *Administrative Assistant*

Ora Uzel

### *Custodian*

Caprice Jones

## CHURCH COUNCIL

### *Chair*

Nancy Hessler

### *Admin Committee Chairs:*

#### *Lay Leadership/Nominations*

Rev. Chuck Layton

#### *Finance*

Rich Young

#### *Board of Trustees*

Mike Loveless

#### *SPPRC*

Dave Kubik

### *Council on Ministries*

#### *Facilitators:*

#### *Invitation & Welcome*

Chris Kohlmann &

Lisa Viertel

#### *Worship & Celebration*

Sue Hattel

#### *Care & Compassion*

Marcia Dubbels

#### *Spiritual Growth/Discipleship*

Nancy Hessler

#### *Witness & Service:*

##### *Community Outreach*

Jennifer Crow

##### *Conference & Global*

(Vacant)

##### *Social Justice*

RRS & Terry Stewart

#### *UMW*

Marcia Young

#### *Certified Lay Ministers*

Kathy & Steven Lamb

# St. Luke's

## United Methodist Church

1199 Main Street, Dubuque, Iowa 52001

Website: [www.stlukesumcdbq.org](http://www.stlukesumcdbq.org)

Email: [dbqstluke@gmail.com](mailto:dbqstluke@gmail.com)

Fax: 563.582.2307

Phone: 563.582.4543 Ext 101 Administrative Assistant

Ext 102 Pastor

Ext 103 Youth Coordinator



*July 16, 2017*

*6th Sunday After Pentecost  
9:30 a.m. Word on the Third  
Contemporary Worship Service*

St. Luke's — Celebrating 184 Years

1833-2017



**St. Luke's United Methodist Church Vision  
Welcoming ALL . . .**

**Caring . . . Serving . . . Growing**

If you have a prayer request, please fill out a prayer card and hand it to an usher.

\* Asterisk denotes the invitation to stand if able. **Bold text** to be read by the people.

9:15 Hymn Sing [Congregational hymn requests] UMH/TFWS  
Closing Song “Open Doors” Inside back cover UMH

### **Preparing Our Hearts for Worship**

Prelude Praise Band  
Lighting of the Candles: *Bringing the Light of Christ Into Our Worship*  
Welcome/Announcements/Greetings/Introductions

### **Praise and Adoration**

\* Song “This is Amazing Grace” Phil Wickham  
\* Song “Here I Am to Worship” Chris Tomlin

### **\* Called to Worship**

\* Opening Prayer (*read responsively*)

Lord God, you are like the snow on the mountain, and like the headwaters of a mighty river, you continually pour blessings into our lives.

**Flow, river, flow! Flood the nations with grace and mercy!**

We long to be like rivers, with your grace and blessings constantly flowing through us. We do not want to be like ponds with no outlet, that get silted up and die.

**Flow, river, flow! Flood the nations with grace and mercy!**

**Be for us a never-ending river of blessing — blessing for us, and through us, for the world.  
Amen.**

\* Opening Hymn “Bringing in the Sheaves” On Screen

### **Called to Community**

“Where Children Belong” TFWS 2233  
Children’s Time Pastor Chuck Layton  
“Jesus Loves Me” (chorus only) UMH 191

### **Called to Reflection**

New Testament Reading:	2 Corinthians 9:6-11	
Psalter Reading:	Psalms 72	UMH 795
*Gospel Reading: <i>And all God's people said:</i>	Matthew 11: 16-19 <b>Thanks be to God!</b>	
Message	"Sowing Resources, Harvesting Joy"	Pastor Chuck Layton

### **Called to Prayer**

Song	"Come to the Water"	Kristian Stanfill
Pastoral Prayer/Lord's Prayer (trespasses)		UMH 895

### **Called to Share**

Sharing our Gifts, our Tithes, our Lives		
Offertory	"Oceans"	Houston/Crocker
Prayer of Thanksgiving/Dedication		

### **Sent to Serve**

<i>Carrying the Light of Christ to the World</i>		
* Sending Song	"Come to the Water"	Kristian Stanfill

### **\* Benediction**

* Benediction		
Closing Song	"This Is Amazing Grace"	Phil Wickham

***Note:** Please feel free to use language in worship that is inclusive and affirms a diverse imagery for God.*

***St. Luke's United Methodist Church***  
***Upcoming Events for July 16 - July 23***

**Sunday, July 16**

9:15 am	Hymn Sing in the Sanctuary
9:30 am	Word on the Third Contemporary Service in the Sanctuary
10:30 am	Coffee & Conversations in the South Hallway
	Hosts: Chancel Choir

**Monday, July 17 — No Events**

**Tuesday, July 18**

9:30 am	Terrific Tuesday at Starbucks at the Dodge Hy-Vee
11:15 am	Seniors Out & About - Small Town Heritage

**Wednesday, July 19 — No Events**

**Thursday, July 20**

10:00 am	Bible Study in the Parlor
----------	---------------------------

**Friday, July 21**

7:00 am	Men's Worship in the Sanctuary
---------	--------------------------------

**Saturday, July 22**

6:30 am	Bread Run — Dan Jacobsen & Steve Sanders
5:30 pm	Food for the Soul in the Fellowship Hall — Bob Jansen
6:00 pm	Saturday Night Praise in the Fellowship Hall

**Next Sunday, July 23**

9:15 am	Hymn Sing in the Sanctuary
9:30 am	Worship Service in the Sanctuary
10:30 am	Coffee & Conversations in the South Hallway
	Hosts: SPPRC



## Prayers For This Week's Joys and Concerns



**Those in Uniform & Their Families**  
**Our Homebound & Those At Care Centers**

**Susan Funke** - rehab in Ankeny

**Marian Thomas** - moved to assisted living

Laurinda Brimeyer's mother

**Mike Sisler** - recovering from heart procedure

Bob Sisler's brother (from Coni Stephenson)

**Family of Rosella Reiss** - passed away

Rita (Chad) Leitch's mother

**Lauren & David Ernst** - home/business fire

Niece of Kathy Lamb

**Family of Greg Van Etten** - passed away

Arnold Van Etten's son

Prayer requests email: [dbqstluke@gmail.com](mailto:dbqstluke@gmail.com)

Prayer listings are listed for two weeks.

## Upcoming Worship Services

9:15 a.m. Hymn Sing precedes summer services

10:30 a.m. Coffee & Conversations follows

**Jul 23** 9:30 a.m. Sunday Worship Service

**Jul 30** 9:30 a.m. Sunday Worship Service

**Aug 6** 9:30 a.m. Sunday Worship Service  
**with Communion**

**Aug 13** 9:30 a.m. Sunday Worship Service

**Every Saturday:** 6:00pm Saturday Night Praise  
 with Communion 1st Saturdays

## St. Luke's Worship and Picnic

**Sunday, August 20th 9:30 a.m.**

**Dubuque Arboretum - Packard Pavilion**



St. Luke's will gather for worship and a picnic potluck, "rain or shine," at the Packard

Pavilion at the Dubuque Arboretum (3800 Arboretum Dr). Pastor Chuck will lead worship. Special music by the Americana Ensemble. Bring a lawn chair, a dish to share and your tableware. Beverages provided. Invite family and friends as we worship together in God's outdoor creation!

## Guided to be a Guide

**Sunday July 16th & 23rd, 2017**

**10:45 a.m. to 11:30 a.m.**

**After Worship**



Mary Armstrong will be giving tours of the treasures of St. Luke's after two worship services for anyone who wants to learn more about the church, its art, and its history or for those interested in helping with tours.



## Youth Lock-In

**Sat July 29th 4:00 p.m. through**

**Sun July 30th 10:30 a.m.**

There will be a youth lock-in Saturday & Sunday July 29-30 at St. Luke's, including Food for the Soul followed by fun and activities into the night! Then Sunday worship. Contact Anezka for more information.

## Lectionary Bible Study

**Thursdays at 10 a.m.**



Meet with Pastor Chuck in the Parlor to talk about scriptures for the upcoming Sunday.



## Farewell Concert

**Sunday July 30, 2017 at 7:30pm**

**St. Luke's UMC — Sanctuary**

Outgoing Music Director Dr. Jeremy Mims and his husband, worship leader Craig Allen, will share a night of piano and voice in both musical theatre, classical music and praise songs. Suggested donation is \$5 to help send Jeremy and Craig off as they move to South Carolina.

## Terrific Tuesdays

*(All at 9:30 a.m. unless noted)*



**Jul 18** Starbucks at the Dodge Hy-Vee

**Jul 25** 8:30am Breakfast at Village Inn

10:00am Sit & Knit in the Parlor

**Aug 1** Café Fraiche

**Aug 8** Manna Java



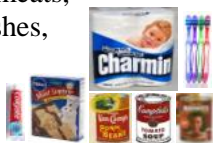
**July 16, 17, & 18 Mission U** in Marshalltown, Iowa. **Studies:** *Climate Justice, "Living as a Covenant Community" & United Methodist Missionary Conferences*

**July 29** — UMW hosts **Food for the Soul** community meal from 4:00 - 7:00 pm. Volunteers are invited to assist! Contact Sue Hattel.

**Beverage tabs** are still being collected on the shelf in the South Hallway. Tabs support Friends of Iowa Prisoners funding education for women at Mitchellville Correctional facility. Thank you!

### Items Needed for the Food Pantry

Pork & beans, soup, canned meats, cake mix, toilet tissue, toothbrushes, toothpaste, garden produce



**Items can go in the South Hall shopping cart.**

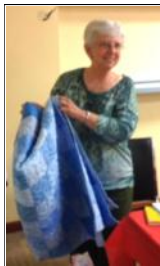
The food pantry serves 275-350 households monthly. Thanks for making this possible!

### Donate to the Jesus Fund

Our "Jesus Fund" is completely out of funds. This ministry helps people in need get healthy groceries by providing them vouchers to Eagle's grocery.



Donations can be given in envelopes put into the offering plate labeled "Jesus Fund." Without your help, the Jesus Fund ministry cannot function and offer those in need the extra food security they need.



### Caring Ministries at St. Luke's

Quilter Pat Hefel and the Busy Bees surprised Marcia Dubbels with a homemade blue bed quilt on July 10<sup>th</sup>. Marcia has been leader of the Busy Bees (a UMW group) which creates over 25 quilts for Hillcrest residential youth each year. **This Sunday is Marcia's last Sunday at St. Luke's.** She is moving to Oklahoma. Marcia was coordinator for Care & Compassion, Seniors Out & About, and a Food for the Soul team over her years at St. Luke's.

### Music Ministries at St. Luke's



**Dr. Jeremy Mims**, Director of St. Luke's Chancel Choir and organist/pianist, and **Craig Allen**, vocalist and worship technology specialist, both at St. Luke's will be transitioning to North Carolina in August. At Sunday worship at 9:30 am on July 30<sup>th</sup>, St. Luke's extends its appreciation to Jeremy and Craig for enhancing worship through their music... glorifying and praising the Lord. Thank you! God's blessings to you.

Also come July 30<sup>th</sup> at 7:30pm for their farewell concert in the Sanctuary!

### Lunch for Habitat for Humanity Build Saturday Aug 5th, 11am 2975 Lenox Street



St. Luke's will provide a lunch for Habitat volunteers at the Habitat work site. **St. Lukers are invited to assist preparing, provide items, or donating \$\$** for the meal. Some assistance needed **servicing** the lunch. Please contact Sue Hattel at [shattel220@aol.com](mailto:shattel220@aol.com) or home 563-556-1394. People interested in volunteering to do **detail work** in the house, may leave a message and number for Elaine Mitchell at 563-588-1691. Volunteers work Saturdays 8:30 am – 3:00 pm.



**Volunteers Needed for  
Dare2Share Live**  
**Saturday, Sept. 23rd, 2017**  
**11:00am - 6:30pm**  
 Doors open at 10:00am  
 St. Luke's UMC - Sanctuary  
 Tickets: \$20 each

Seeking volunteers! **Please contact Jennifer Crow or Mark Beard for more information.**

More information at [www.dare2sharelive.org](http://www.dare2sharelive.org)



### Readers Needed!

Volunteer Readers are needed to read to groups of children for 15 minute reading times in the mornings and afternoons this summer at the St. Mark Youth Enrichment Center and the Boys and Girls Club facilities.

To volunteer contact:  
**Danielle Willis, Program Director**  
**563-582-6211 ext. 110**  
**dwillis@stmarkyouthenrichment.org**

She will coordinate times and places for you to participate in this cooperative project.



### National Alliance on Mental Illness (NAMI)

**July 18th, 7-8pm**  
**900 Jackson St, Ste LL5-2B**

NAMI hosts support group meetings designed for loved ones of individuals living with mental illness which take place the First Tuesday of each month. Find more information at:

[www.namidubuque.org](http://www.namidubuque.org) — **563-557-6264**

### Trash & Treasure Sale

**Immanuel Cong. UCC, 1795 Jackson St.**  
**Friday August 4, 2017 — 8:00 am to 3:00 pm**  
**Saturday August 5, 2017 — 8:00 am to Noon**  
 Saturday \$3.00 bag sale: 11:00 am



### Edible Landscaping

Edible landscaping is the practice of incorporating plants which bear fruits, vegetables or nuts into the home landscape. It is another opportunity to capitalize growing space, especially in urban areas, to produce food and to further local food production, either for the growers household or for donation sites. Many edible plants have attractive foliage and fruits and add to the color of a landscape. It is not too late to add some edibles to your landscape. Lettuce is an easy way to start and there are many varieties of lettuce that are colorful. They grow well in pots too. Plant some now and be ready for BLTs.



— *St. Luke's Green Team*



### Summer Sustainability Fair

**Dubuque Rescue Mission Gardens**  
**300 Iowa St., Dubuque**  
**Sat. July 29th, 11am to 3pm**  
**Free Admission**

The 3rd Annual Summer Sustainability Fair will feature fair games, prizes, giveaways, live entertainment, crafts, local speakers, local food, and interactive booths from: Sustainable Dubuque, St. Mark Youth Enrichment, Operation New View, Green Dubuque, the Girl Scouts, DMASWA, and many more!

For more information, contact:  
**Green Iowa AmeriCorps**  
**563-556-5130 or [greeniowadb@gmail.com](mailto:greeniowadb@gmail.com)**



### Parking Spots Available

The church parking lot currently has spots 5, 6, 14 & 15 available for rent at \$35 per month. Rental is for weekdays 8am to 5pm. If someone would like to rent a spot, have them note their license plate information; make, model, and color of their car; and contact the church office at:

**563-582-4543 | [dbqstluke@gmail.com](mailto:dbqstluke@gmail.com)**

## Our Worship Specialists

	<u><b>July 16, 2017</b></u> <b>9:30 a.m.</b>	
<b>Greeters/Ushers</b>	Gary & Kathy Reid	
<b>Acolyte</b>	Sara Albert	
<b>Children's Time</b>	Pastor Chuck Layton	
<b>Offering Depositor</b>	Mark Tilson	
<b>Liturgist</b>	Praise Team	
<b>Communion Steward</b>	—	
<b>Organist/Pianist</b>	Dr. Jeremy Mims	
<b>Chimer</b>	R.R.S. Stewart	
<b>Hymn Sing</b>	Pastor Chuck Layton	
<b>Slides</b>	Matthew Hull	
<b>Projectionist</b>	Matthew Hull	
<b>Videographer</b>	Ron Liskey	
<b>Worship Driver</b>	Chris Becker	
<b>Coffee &amp; Conversation</b>	Chancel Choir	
	<b>Saturday, July 15</b>	<b>Saturday, July 22</b>
<b>Bread Run</b>	Mike & Cheri Loveless	Jacobsen/Sanders
<b>Food for the Soul</b>	Team 4	Bob Jansen

### **Music Directors**

**Chancel Choir** — Dr. Jeremy Mims      **Children's Music** — Heather Williams  
**St. Luke's Singers** — Keith Rippe      **Chimers** — Larry Loepke  
**Bell Choir Director** — David Patterson      **Word on the Third** — Praise Team  
**Wind Ensemble**

**Lead Organist:** Dr. Chuck Barland