

## STAFF

### *Pastor*

Rev. Chuck Layton

### *Children/Youth Ministry*

Mark Beard

### *Administrative Assistant*

Ora Uzel

### *Custodian*

Caprice Jones

## CHURCH COUNCIL

### *Chair*

Cheri Loveless

### *Admin Committee Chairs:*

#### *Lay Leadership/Nominations*

Rev. Chuck Layton

#### *Finance*

Erick Kephart

#### *Board of Trustees*

Lesley Stephens

#### *SPPRC*

Susan McGovern

### *Council on Ministries*

#### *Facilitators:*

#### *Invitation & Welcome*

Chris Kohlmann and

Lisa Viertel

#### *Worship & Celebration*

Sue Hattel

#### *Care & Compassion*

Marcia Dubbels

#### *Spiritual Growth/Discipleship*

Nancy Hessler

#### *Witness & Service and*

#### *Community Outreach*

Jennifer Crow

#### *Conference & Global*

Otto Krueger

#### *Social Justice*

RRS & Terry Stewart

#### *UMW*

Marcia Young

#### *Certified Lay Ministers*

Kathy & Steven Lamb

# St. Luke's

## United Methodist Church

1199 Main Street, Dubuque, Iowa 52001

Website: [www.stlukesumcdbq.org](http://www.stlukesumcdbq.org)

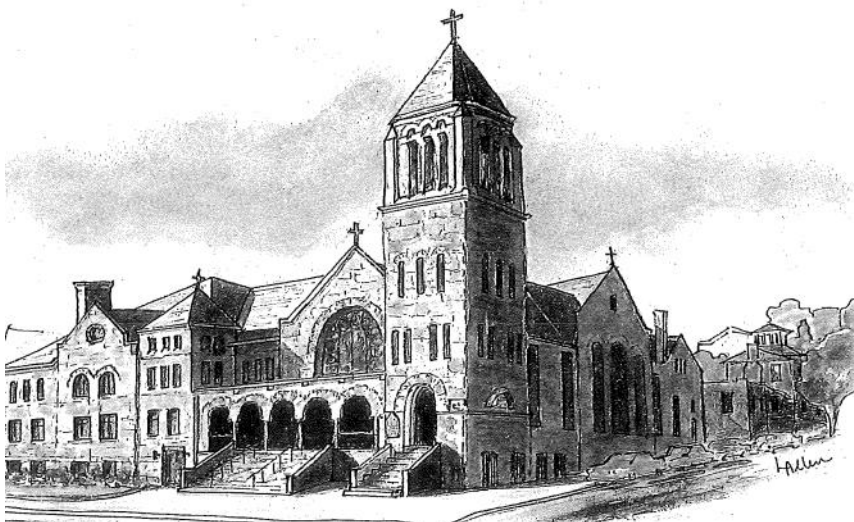
Email: [dbqstluke@gmail.com](mailto:dbqstluke@gmail.com)

Fax: 563.582.2307

Phone: 563.582.4543 Ext 101 Administrative Assistant

Ext 102 Pastor

Ext 103 Youth Coordinator



*July 24, 2016*

*10th Sunday After Pentecost*

*9:30 am - Mt. T.O.P. Worship & Word on the Third*

*St. Luke's—Celebrating 183 Years*

1833-2016



**St. Luke's United Methodist Church Vision**

**Welcoming ALL . . .**

**Caring . . . Serving . . . Growing**

**Preparing Our Hearts for Worship**

*(Please note: If you have a prayer request, please fill out a prayer card and place it in the basket on the back table, hand it to an usher, or place it in the offering plate. Thank you!)*

*\* Denotes the invitation to stand if able.*

Welcome/Announcements

Passing the Peace / Visitors

Prelude "Sanctuary"

Song "Since Your Love"

Mountain T.O.P. Welcome and Introductions

**\* Called to Worship**

\* Invocation

Leader: We are made to Love.

**People: We love because God first loved us.**

Leader: We are made to Serve.

**People: For even Jesus did not come to be served, but to serve**

Leader: We are made to Pray.

**People: Rejoice always, pray continually, give thanks in all circumstances.**

Leader: We are made to Lead.

**People: Set an example for the believers in speech, in conduct, in love, in faith and purity.**

Leader: We are made to Live.

**People: Live fully in Jesus; He is the reason we serve.**

Leader: We are made to Go.

**ALL: We will Go and make disciples.**

**This we do with the confidence that You are with us always.**

**Time With the Young Church**

Children's Time

"Where Children Belong"

"Jesus Loves Me"

FWS 2233

UMH 191

Song "Overwhelmed"

## *Called to Prayer*

Sharing Our Joys and Concerns  
Pastoral Prayer / Lord's Prayer (trespasses)

UMH 895

## *Called to Reflection*

\* Mountain T.O.P. Foundational Scripture: Matthew 4: 18-20  
Mountain T.O.P. 2016 Theme Scripture: Psalm 139: 14

## **Stories from the Mountain**

Stories by the youth and adults that attended Mountain T.O.P. at Camp Baker Mountain

## *Called to Share*

Sharing our Gifts, our Tithes, our Lives

Offertory

\* Song of Praise    “Praise God”    UMH 94

\* Prayer of Thanksgiving

\* Hymn    “Here I am Lord”    UMH 593

Thanks to the Congregation

**“The Mountain T.O.P. Song”**  
All the Mountain Toppers, past and present

## *\* Benediction*

\* Benediction

Postlude    “The Name of the Lord”

***Note:** Please feel free to use language in worship that is inclusive  
and affirms a diverse imagery for God.*

## *Upcoming Events for Week of July 24-July 31*

### **Sunday, July 24**

9:00 am Coffee & Conversation in South Hall—Mt. T.O.P.  
9:30 am Mountain T.O.P. & Word on the Third  
Contemporary Worship Service in the Sanctuary  
10:30 am Coffee & Conversation in South Hall—Mt. T.O.P.

### **Monday, July 25**

8:00 am Chimes Deadline

### **Tuesday, July 26**

8:30 am Terrific Tuesdays—Breakfast at Village Inn  
10:00 am Sit & Knit in the Parlor  
5:00 pm Give Back Project

### **Wednesday, July 27—No Events**

### **Thursday, July 28**

10:00 am Bible Study in Wesley Room  
6:30 pm Church Council

### **Friday, July 29**

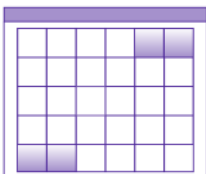
7:00 am Men's Worship in the Sanctuary

### **Saturday, July 30**

6:30 am Bread Run — Breese/Young  
5:30 pm Food for the Soul in the Fellowship Hall — Team 3  
6:00 pm Saturday Night Praise in the Fellowship Hall

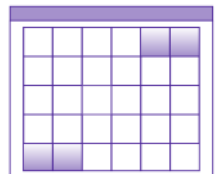
### **Next Sunday, July 31**

9:00 am Coffee & Conversation in South Hall—Finance Committee  
9:15 am Chimes played  
9:15-9:28 am Hymn Sing in the Sanctuary—Robert Armstrong  
9:29 am Hymn Sing Concludes with *Open Hearts, Open Minds*  
9:30 am Worship Service in the Sanctuary  
10:30 am Coffee & Conversation in South Hall—Finance Committee



***Check out the Church Calendar Online!***  
***Up to date! Months in advance!***

***[www.stlukesumcdbq.com](http://www.stlukesumcdbq.com)***





## *Prayers For This Week's Joys and Concerns*



Prayer listings will be listed for two weeks unless otherwise specified. If a name is removed too early, please let us know, and we'll put it back on the list.

### **Men & Women in Uniform, Their Families, and our Homebound**

- The Hattels' friend, Kaye**— Cancer treatment
- John Duggan**—Aggressive cancer treatment
- John's friend, Eve** — Accident & cancer
- Kim Sheldon's friend, Dianne** — Brain cancer
- Sarah Redding** — Hearing loss surgery
- Bruce Redding's sister, Donna** — Eye surgery
- Bruce's brother-in-law Larry**—Back surgery
- Gerald Pins' wife Carol**—Hospitalized, dialysis
- Rick Blasen**—Serious injuries from an accident
- Coni Stephenson's friend Joanne**—Shingles
- Coni's Aunt Evelyn & cousin Brett**—Health
- Coni's coworker Amy**—Back surgery
- Coni's son's friend Diane**—Cancer
- Edna Mahan's nephew Bill**—Terminal cancer
- Jennifer Crow's friend Julie** — Hospice care
- Marcia & Rich Young's grandson Avery**—heart
- Bonnie Sanders's friend Dee**—Cancer
- Laurinda Brimeyer**—Hernia surgery recovery
- Martha Laaker**—Mini stroke
- Ruth Jones's daughter-in-law Anne**—Cancer
- Angela Osterkamp**—Health issues
- A.J. Osterkamp**—Heart issues, depression
- Sara Albert's friend Pat**—passed away
- Nick Ashbrook's grandmother Mary**—Cancer

Send prayer additions or changes to:  
**dbqstluke@gmail.com**

### *Heart of Dubuque*

**FREE Ice Cream Social  
Comiskey Park**

**Sunday, July 24th, 1-3pm**

All ages games, fellowship, ice cream, music, prizes, and face painting, sponsored by DDCO, NENA, and Realm of Halbren LARP.



## **LASER TAG!**

**August 6, 2016**

**10:00am - 4:30pm**

QC Entertainment  
Moline, IL

Join us for two games of laser tag, a game of bowling, pizza, soda, and fun times for all!

Sign-up in the **South Hall**

*Today is the last day to sign up!*

Middle School and High School ages only.

### *Parking Spots Available*



Our parking lot on the south-east corner of 12th and Main has two adjacent spots currently available for rental during weekdays 8-5. Rent is \$35 per month. Please spread the word to see if anyone needs a spot to rent! Have them call or email Ora at the church office:

**563-582-4543** or **dbqstluke@gmail.com**

**Weekday church volunteers**, remember to park in the church parking spots and save your meter money for offerings. The church has these spots specifically for this reason. Spots 1 & 2 are always open. Spots 13 & 14 are open until rented. Ask Ora in the Office if you have any questions.

### **Ride to Worship Messages**

Need a ride to worship? Phone messages can now be left at the church office on weekends at 563-582-4543. When the voicemail message plays, dial 104, and leave your message as instructed. Drivers will check the messages.

### **Upcoming Sundays**

- July 31st-Aug 14th — Regular Sunday services
- Aug 21st — **Word on the Third** at **Arboretum**
- Aug 28th-Sept 4th — Regular Sunday services
- Sept 11th — **Kickoff Sunday**



## Gone Fishin' August 12, 2016

We'll travel to the Bluff Lake Catfish Farm near Maquoketa, IA. Everyone is invited to join us. We don't discriminate based on age.

Bluff Lake Catfish Farm specializes in All-You-Can-Eat meals that will keep you coming back for more. They take pride in their food and strive to create the best customer satisfaction possible.

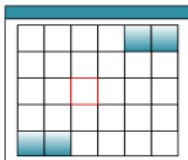


Their menu covers all tastes and preferences and is competitively priced for all budgets. The rural location is located in the beautiful Iowa River Valley between two lakes, a 50 foot waterfall, and the Maquoketa River.

Cost: **\$5 per person** (transportation)  
Registration Deadline: **August 5, 2016**  
We leave **Woodlands** at **3:00 pm**  
Contact: **Marcia Dubbels** at **582-6634**

### Chimes Archives & Online Calendar

New to the church website! We now have an archive of Chimes newsletters and a regularly updated **online calendar!** Check it out at the church website:



[www.stlukesumcdbq.org](http://www.stlukesumcdbq.org)

### Key Inventory



For regular security maintenance, we take inventory of our keys. If you have a church key, please notify the office, including the letter (and number, if any) you have on your key:

**582-4543** or [dbqstluke@gmail.com](mailto:dbqstluke@gmail.com)



## Bible Study Thursdays at 10 am

You're invited to meet with Pastor Chuck on Thursdays at 10 am in the Wesley Room to talk about the scriptures for the upcoming Sunday.

### Terrific Tuesdays

*(All at 9:30 a.m. unless otherwise noted)*

- July 26** 8:30am Breakfast @ Village Inn
- 10:00am Sit & Knit, Parlor
- Aug 2** Café Manna Java
- Aug 9** Jitterz
- Aug 16** Big Apple Bagels
- Aug 23** Panera



### UMW—Faith. Hope. Love in Action

**THANK YOU** for your donations of **beverage tabs** to support education courses for women prisoners at Mitchellville, IA Correctional Institution.

**THANK YOU** for your **UPC labels of Campbell soup** and other products to support programs at Bidwell Riverside Center in Des Moines serving children, youth and families in poverty.

**UMW is committed** to be in mission serving children, youth, women and families. These outreach donations may be placed in plastic contain-

### Nursery Help Still Needed!

Anezka Lungwitz is here most of the time, but she needs a helper. **We need two people** for the nursery. Teens can get community service hours.

Contact Mark Beard [dbqstlukeskids@gmail.com](mailto:dbqstlukeskids@gmail.com)

### Food Pantry Supplies for July

- Garden Produce ~ Soup ~ Tuna
- Toothpaste ~ Toilet Tissue
- Kids' Cereal Packets ~ Kids' Fruit Cups
- Cake Mix ~ Brownie Mix ~ Frosting

## Habitat for Humanity Update

A house was built at 2902 Elm Street during a "5 day building blitz" June 6-10, sponsored by Dubuque Builders Association and Habitat for Humanity of Dubuque & Jackson counties in partnership with the Laura Morris Family. On Friday, June 17 at 4pm, a community



Dedication and Blessing of the home was held.

A Habitat for Humanity FAITH has made preparations at 767 University to excavate and pour cement. Completion planned for fall.

- 1) Volunteers needed Saturdays until finished;
- 2) Meals for workers also needed;
- 3) Donations to fund this or future builds accepted.

### Questions/scheduling, contact:

Habitat Board member, Elaine Mitchell  
**563-588-1691** or [diettou@gmail.com](mailto:diettou@gmail.com)



## St. Luke's Garden Ministry News

**Edible Garden News:** Edible landscaping will be planted around the old parsonage next door to the church in addition to the container garden and two blueberry bushes provided with a Sustainable Dubuque grant. Edible landscapes increase local food production, decreasing fossil fuel use.

Edible landscapes are planned for St. Luke's parking lot, as a model for farmer's market goers. To volunteer, text or email Jennifer Crow at **563-564-2176** or [jjcrow24@aol.com](mailto:jjcrow24@aol.com)

### Purdy Produce Plot St. Luke's Church Garden:

Food for the Soul served or gave away 65 lbs of lettuce, with Sonya DeMulder donating kale.

Terry Stewart, Terrie Berry, Marcia Dubbels, Helen Johnston, and Kathy Michel helped prep fresh produce from the church gardens. Beans were served, thanks to Aaron Burbach's weeding, Jennifer Crow, Keith Rippe, and Chris Kohlmann's picking, and Marcia and Terrie's cleaning. Fresh veggies made a great veggie tray.

The Burbach family helped plant, weed, and water (Zoe below); and help is always needed!

**563-590-5313**

[mary\\_purdy@hotmail.com](mailto:mary_purdy@hotmail.com)

**Follow the garden ministry:**

[www.facebook.com/stlukescommunitygardens/](https://www.facebook.com/stlukescommunitygardens/) or:  
[www.dbqcommunitygardens.com](http://www.dbqcommunitygardens.com)



## Food for the Soul: Grants at Work

Iowans are rated 50th, dead last in fruit and vegetable consumption. 60-80% of fruits and vegetables in Iowa come from California at high costs, prohibiting access and proper nutrition.

We've received grants and donations to address hunger and malnutrition, including: the Matthew 25 grant, which pays for healthy snacks, a monthly food giveaway, and peanut butter sandwiches; the Elks Lodge \$700 donation for produce from St. Stephen's Food Bank; and the Dubuque Rotary Grant to fund the Purdy Produce Plot St. Luke's Church Garden and to reimburse up to \$60 of produce at Food for the Soul.

Our meals are often the only source of fresh fruits and vegetables for our guests, but through the Food Bank, 120 lbs. of produce costs just \$21, or 38 lbs. of cherries just \$10.

See the Garden News (left) for vegetables provided by the church garden for our meals. Our guests love these foods and swoop them up. Don't allow the myth of "poor people only eat junk food." It's simply not true. Dispel this myth by



sharing the experiences we have at Food for the Soul. If you have a garden with extra produce, please donate; or contact Mary to volunteer (see left).

## Our Worship Specialists

	<b><u>July 24, 2016</u></b> <b>9:30 a.m.</b>	
<b>Greeters</b>	Mountain T.O.P.	
<b>Acolytes</b>	Mountain T.O.P.	
<b>Liturgist</b>	Mountain T.O.P.	
<b>Ushers</b>	Mountain T.O.P.	
<b>Children's Time</b>	Jessica DuBord	
<b>Chimer</b>	N/A	
<b>Projectionist</b>	Paul Clark	
<b>Announcements/Slides</b>	Paul Clark	
<b>Videographer</b>	Bobby Martin	
<b>Organist/Pianist</b>	Dr. Jeremy Mims	
<b>Worship Driver</b>	Rich Young	
<b>Offering Depositor</b>	Dick Landis	
<b>Coffee/Conversation</b>	Mountain T.O.P.	
<b>Hymn Sing Leader</b>	N/A	
<b>Communion Steward</b>	N/A	
	<b>Saturday, July 23</b>	<b>Saturday, July 30</b>
<b>Bread Run</b>	Matt & Foster Hull	Breese/Young
<b>Food for the Soul</b>	Team 2	Team 3

### **Music Directors**

<b>Chancel Choir</b> —Dr. Jeremy Mims	<b>Children's Music</b> —Heather Williams
<b>St. Luke's Singers</b> —Keith Rippe	<b>Chimers</b> —Larry Loeppke
<b>Bell Choir Director</b> —David Patterson	<b>Word on the Third</b> —Praise Team

### **Wind Ensemble**

**Lead Organists/Pianists:** Dr. Charles Barland, Helen Johnston